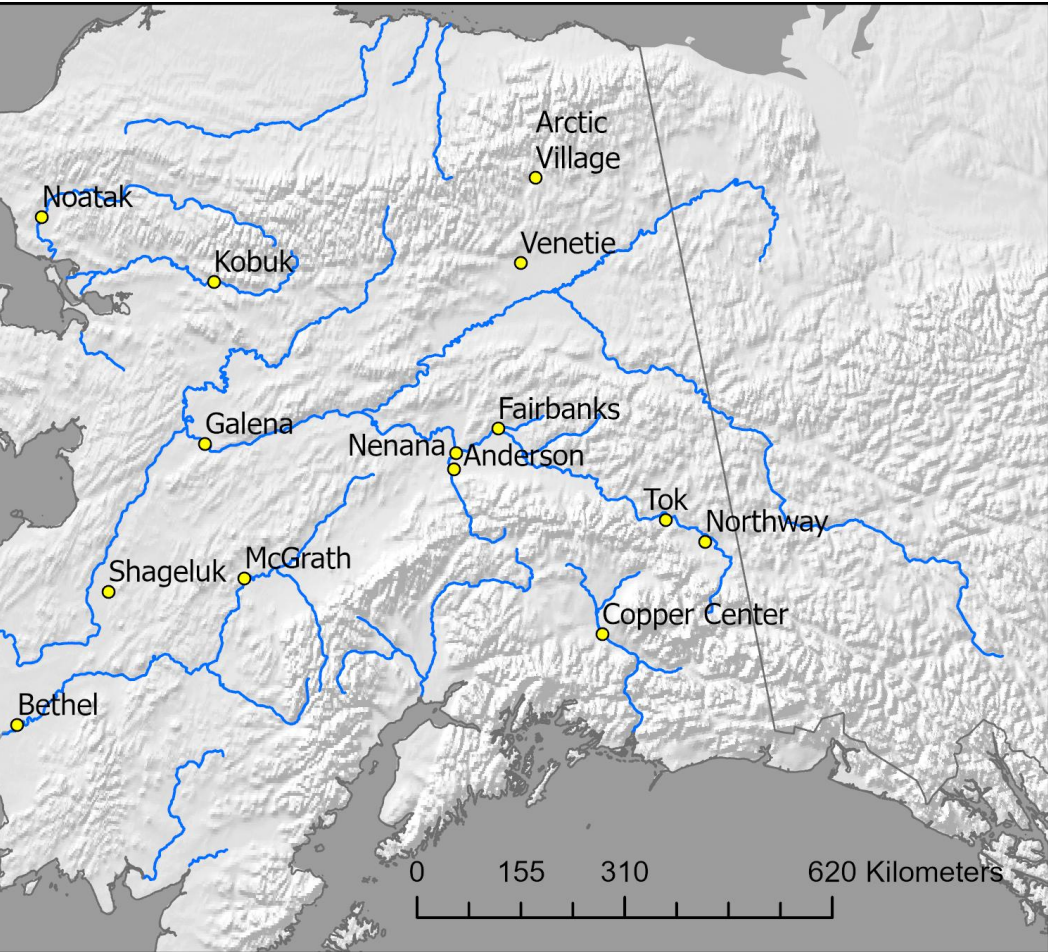


# Ice conditions update: Dec 8, 2020



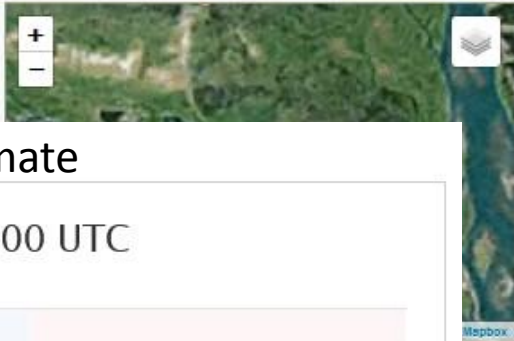
# Copper River Basin

Copper\_River\_Below\_Tazlina 2020-12-07 22:01:16 UTC  
62.02457, -145.37381 12.5V -14.5°C PL



Date: 2020-11-27

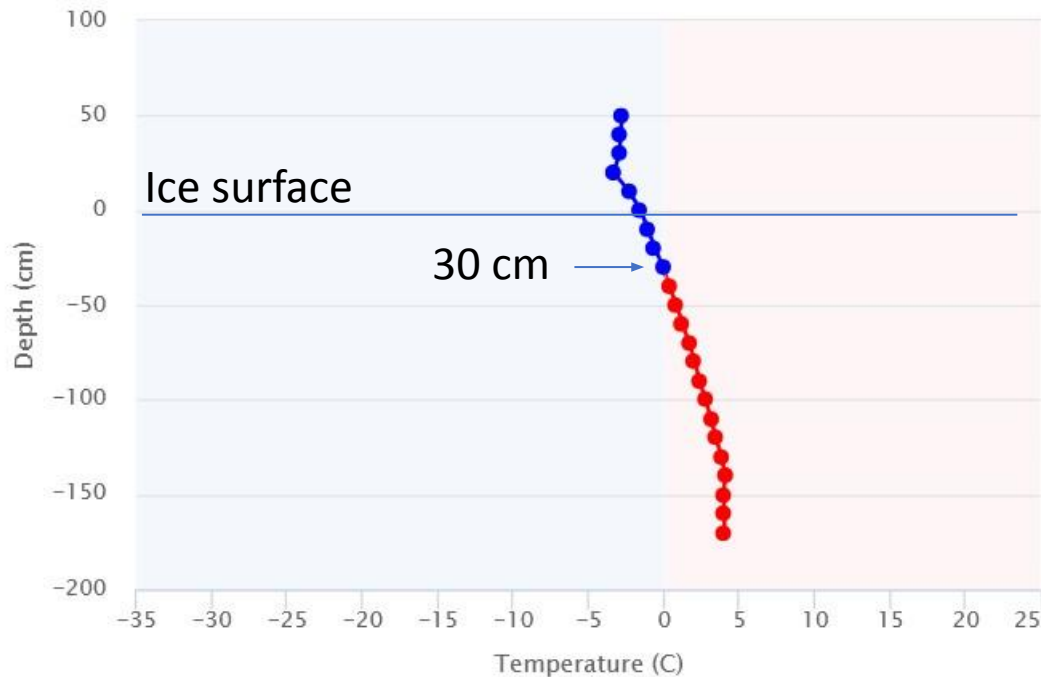
the bridge  
stream. Nov  
the right



Vertical Profile

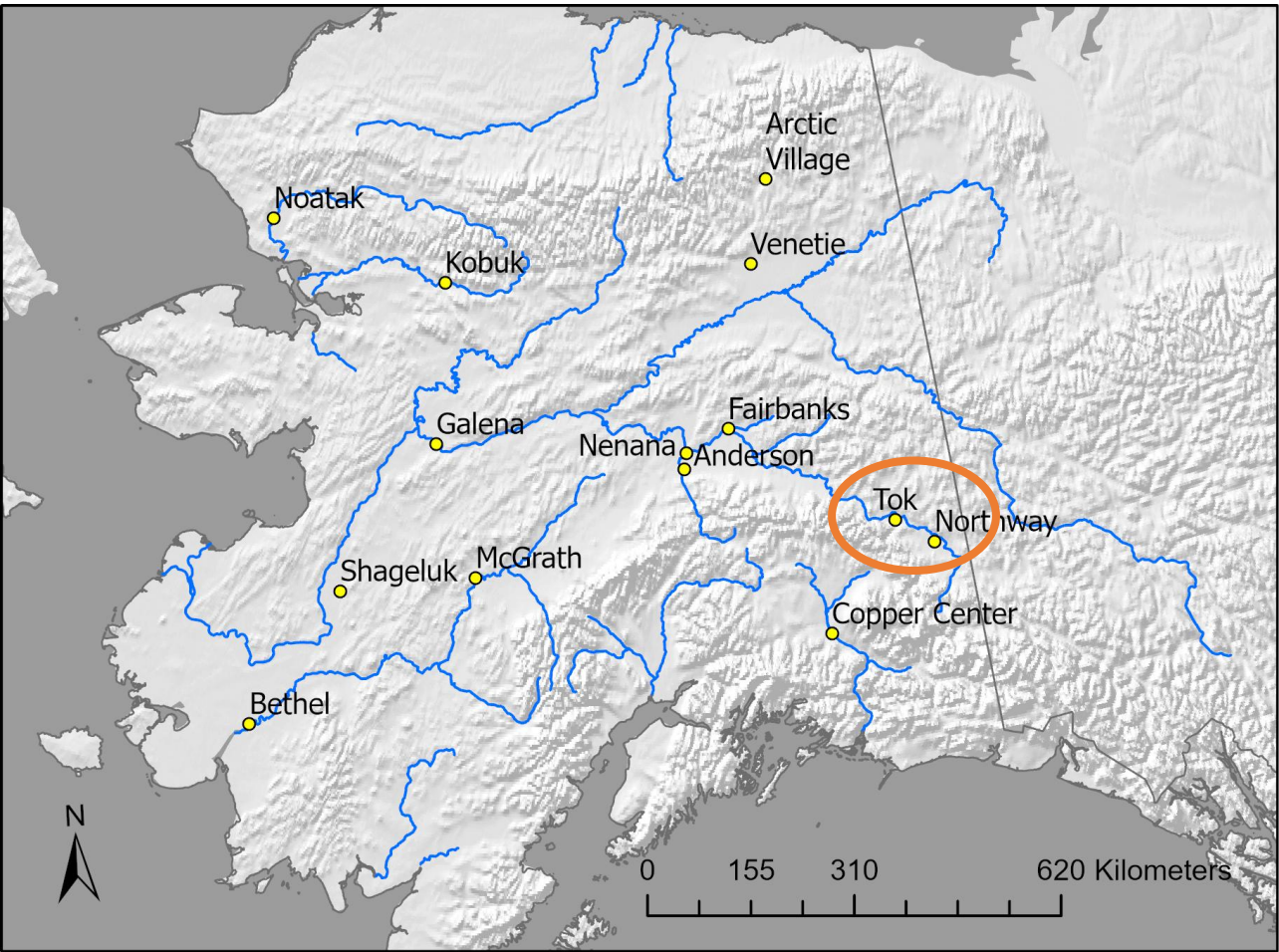
Ice thickness estimate

Dec 08, 2020 19:13:00 UTC





# Tok



Bobby Kelso

December 3 at 10:31 AM · 🌐

Tok school is officially online through January 15th, but I was able to sneak out 1 student!

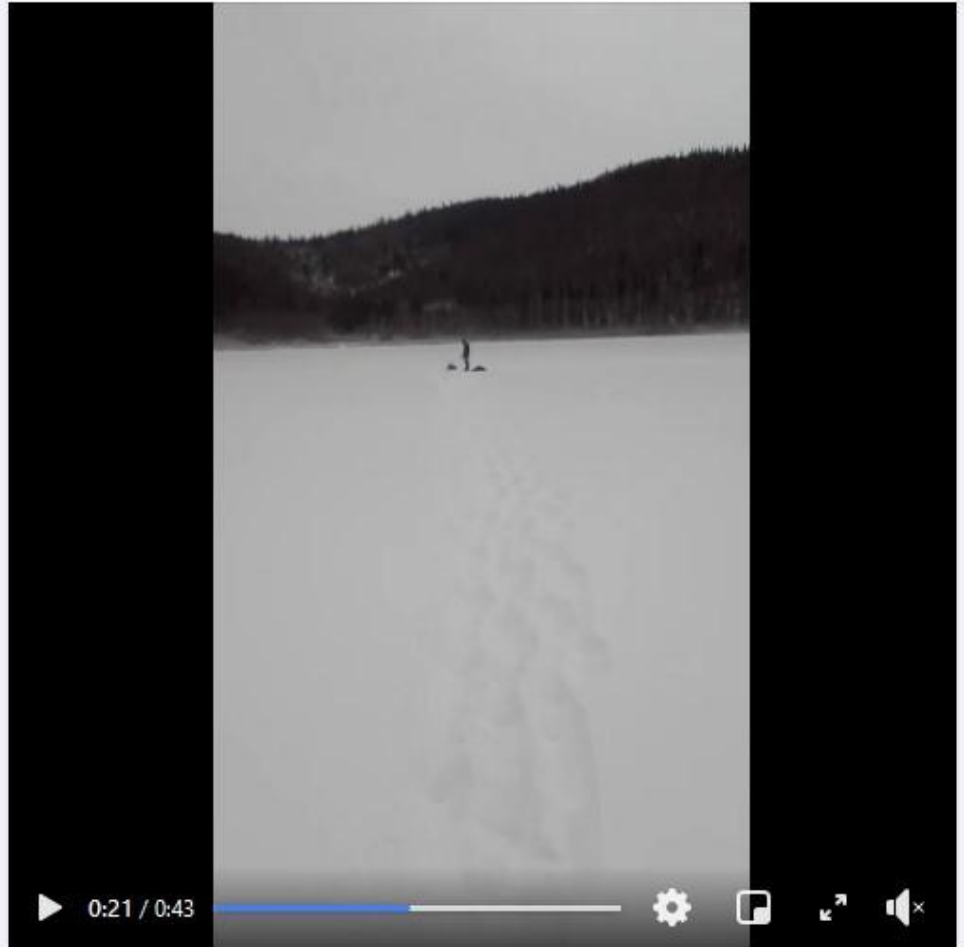
We measured Ice thickness on Jan Lake.

Results:

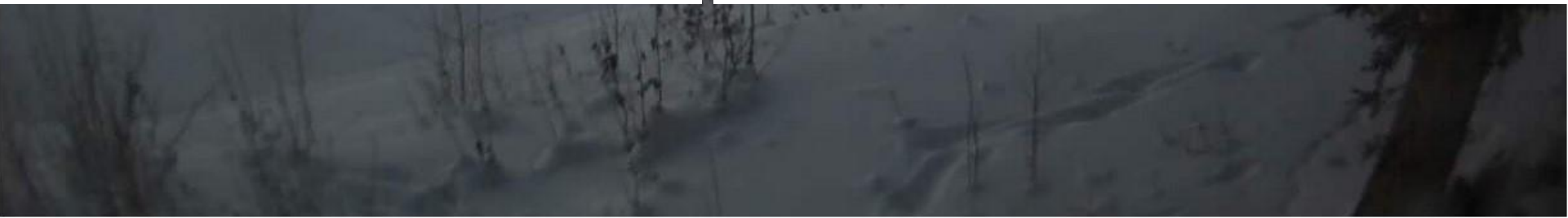
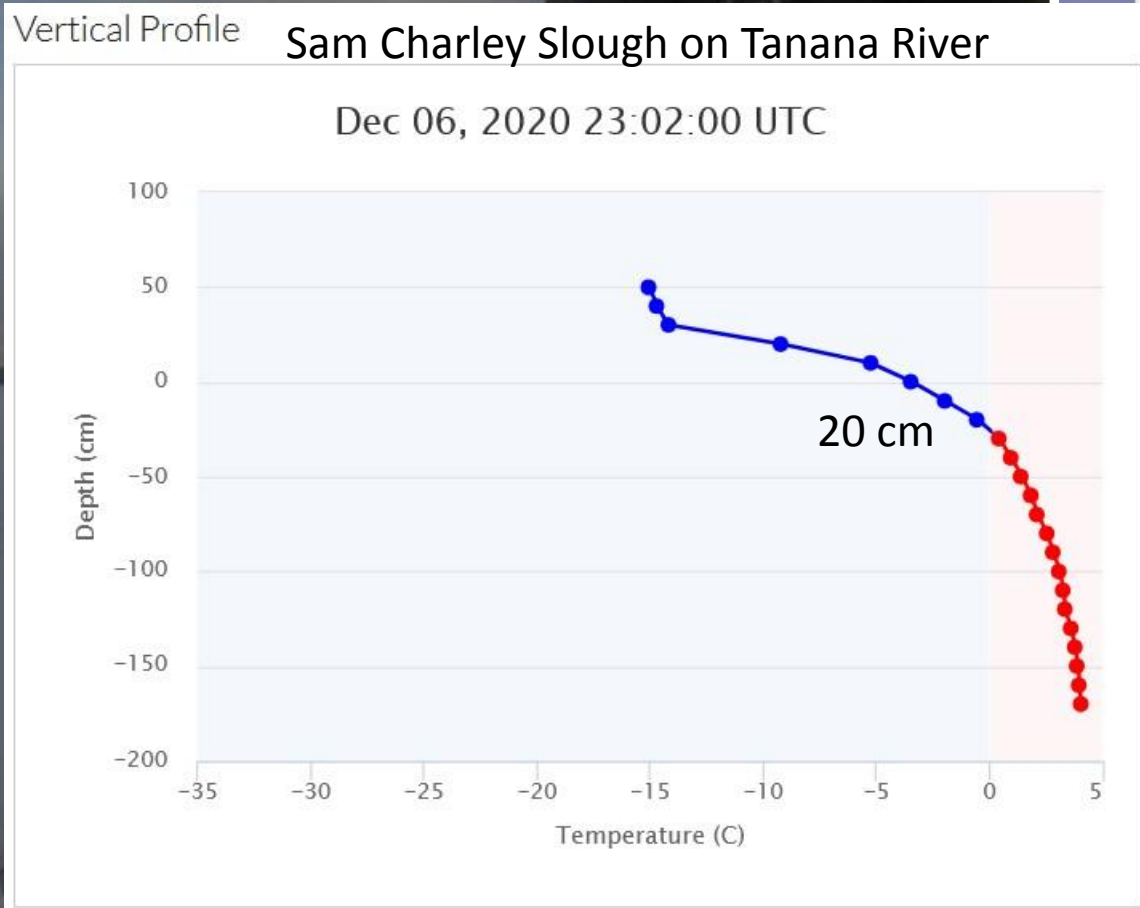
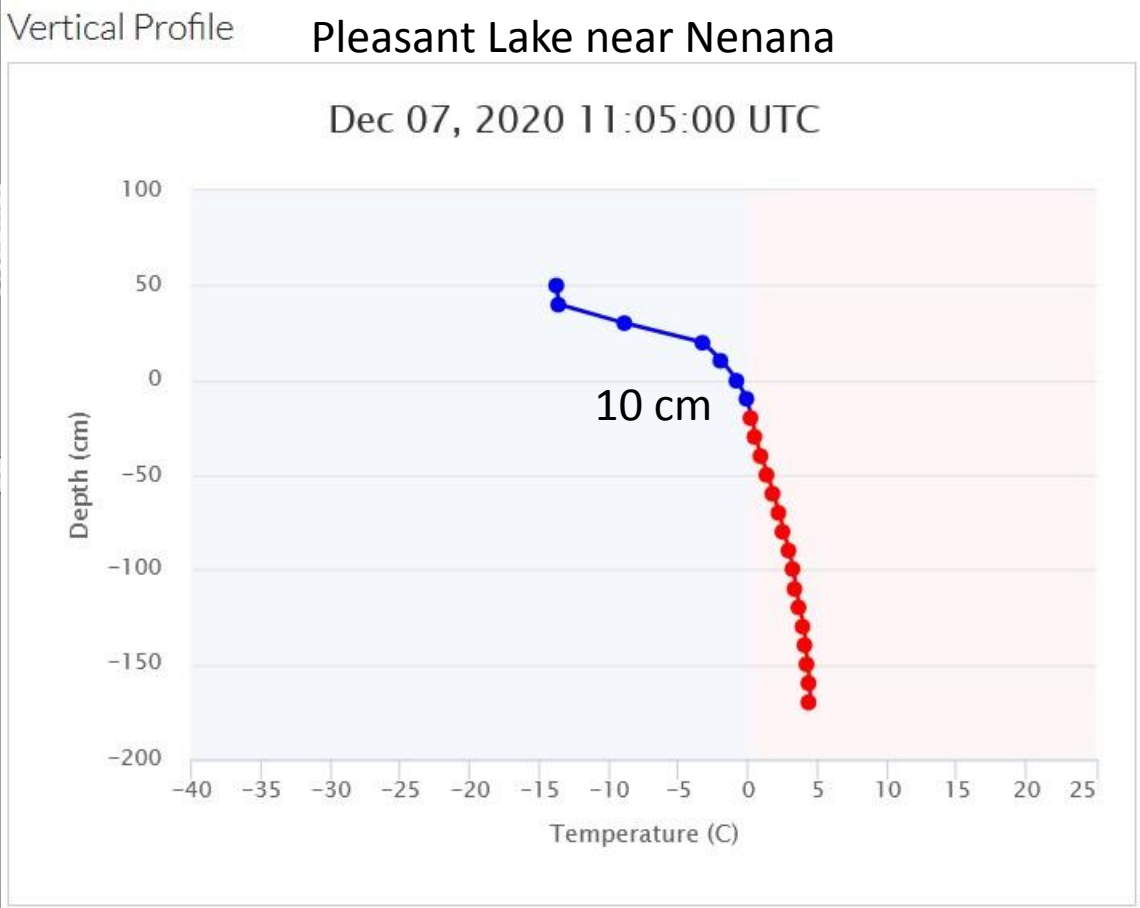
Ice thickness: 12 1/2 Inches

Snow depth: 5 inches

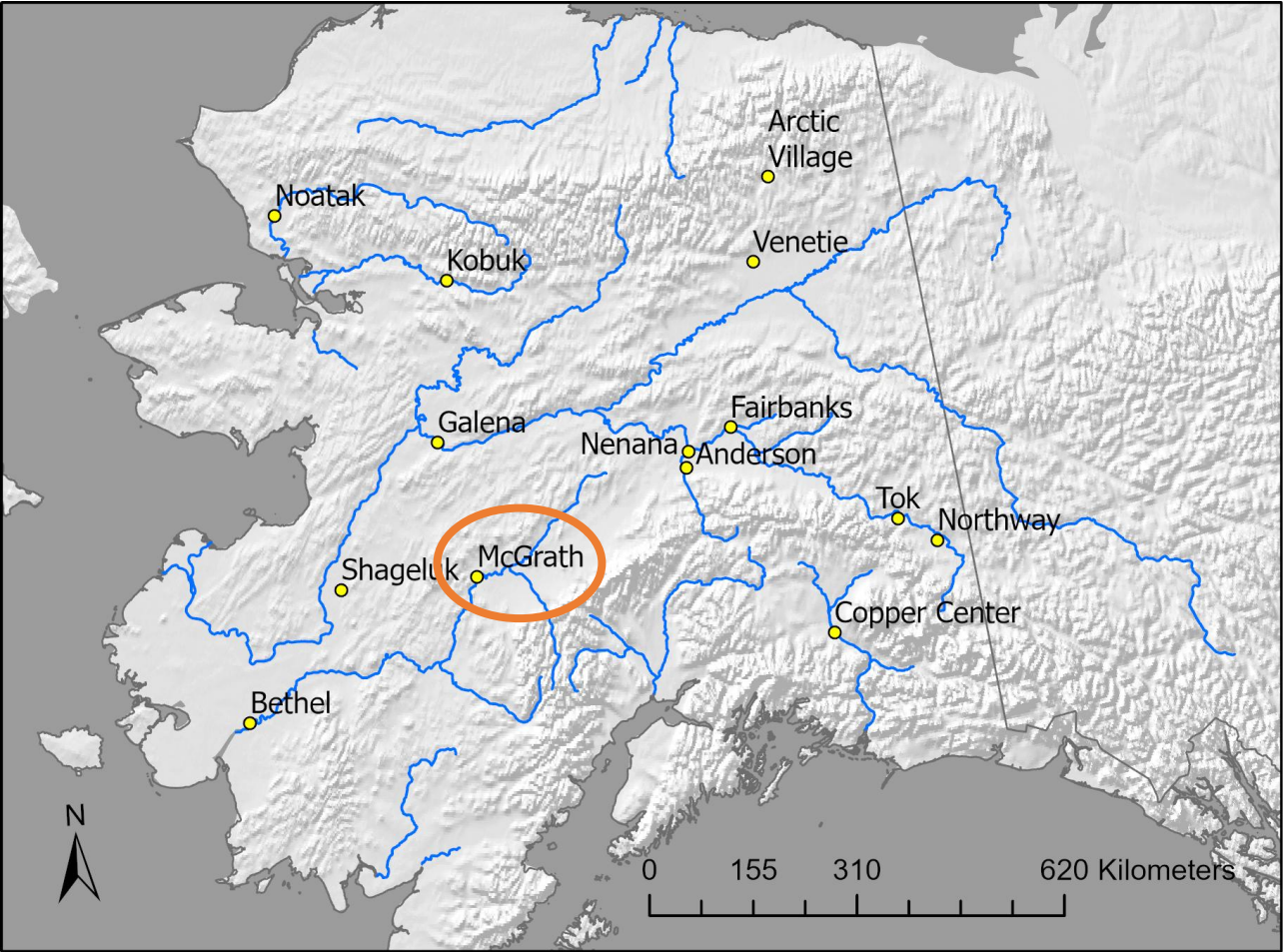
Snuck in a little ice fishing after we ice picked the hole.



Fairba



# McGrath







Lindsay Sturm

November 27 at 7:42 PM · 🌐



My boys out enjoying the ice on the spillway in McGrath.



Lindsay Sturm

November 21 at 4:13 AM · 🌐



A few pictures from just above the runway in McGrath. I joined to bring a special placed based STEM opportunity to my K-2 classroom.





**Shelborne Christopher**

★ Rising Star · November 15 at 9:47 AM · 🌐



Expect rough traveling from McGrath to Takotna this year. Hoping for a good solid freeze and enough snow to even this out. (Kuskokwim River, near mouth of Takotna River)



**Shelborne Christopher** shared a post.

★ Rising Star · November 25 at 2:18 PM · 🌐



McGrath is in the distance



**Shelborne Christopher**

November 22 at 5:54 AM · 🌐

The mouth is still wide open



[Home](#)

Observation at 2020-11-14 by Loree' Boggess

Date:2020-11-14

Description:Kuskokwim River. Weather: 16°F and snowing. Large ice chunky on sides of river (9-12 ft across / 1-2 ft thick). Open channel in center.

Name:Loree' Boggess

Location Mode:Map Click

Latitude:62.958559

Longitude:-155.596597

Leaflet | Map data © OpenStreetMap contributors, CC-BY-SA, Imagery © Mapbox

Photo

Photo Latitude:N/A

Photo Longitude:N/A

Photo DateTime:N/A

Photo Google Maps:N/A

Loree Benjamin Boggess

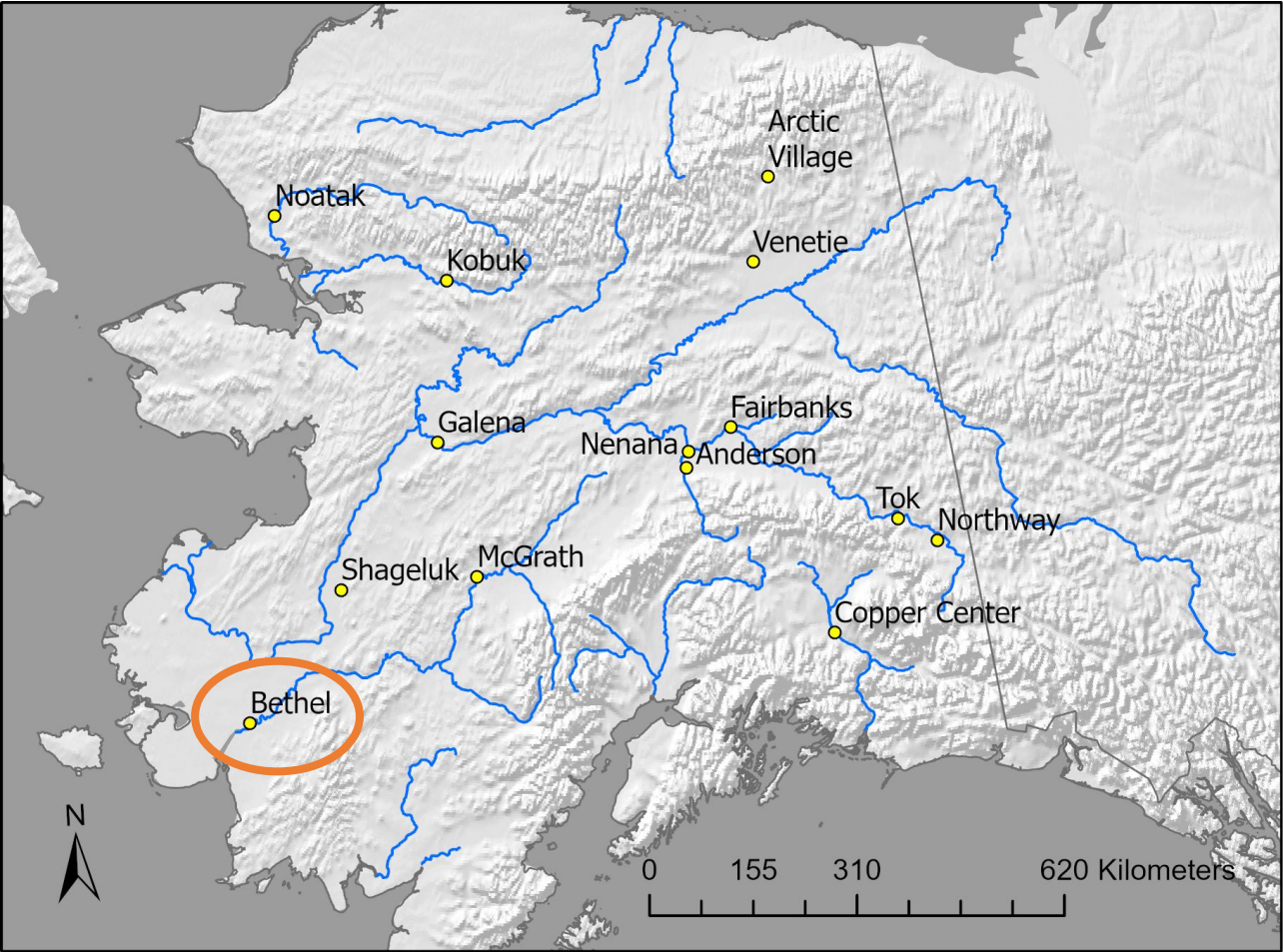
December 5 at 9:30 PM · 🌐

...

-17°F. Kuskokwim River just above the confluence of the Takotna River. There is an open channel in the middle of the Kuskokwim River. There is fog forming above the open channel.



# Bethel



Beverly Chmielarczyk

Visual Storyteller · November 26 at 2:20 PM · 🌐

Peaceful sunrise in Bethel after a few inches of fresh snow during the night. Still not safe to travel. Enjoy break, everyone. ❄️

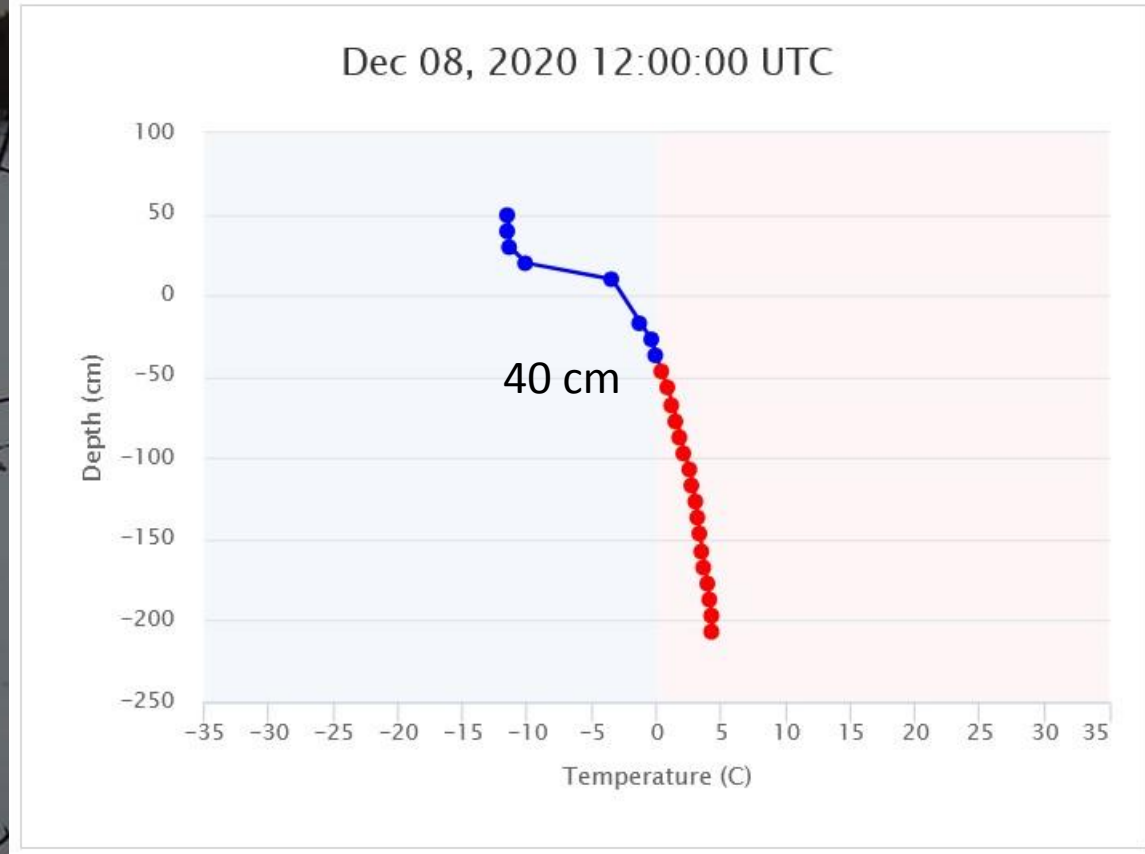


# Shage

Innoko\_River\_below\_Shageluk 2020-12-07 22:01:11 UTC  
62.65298, -159.54861 12.9V -10.5°C P

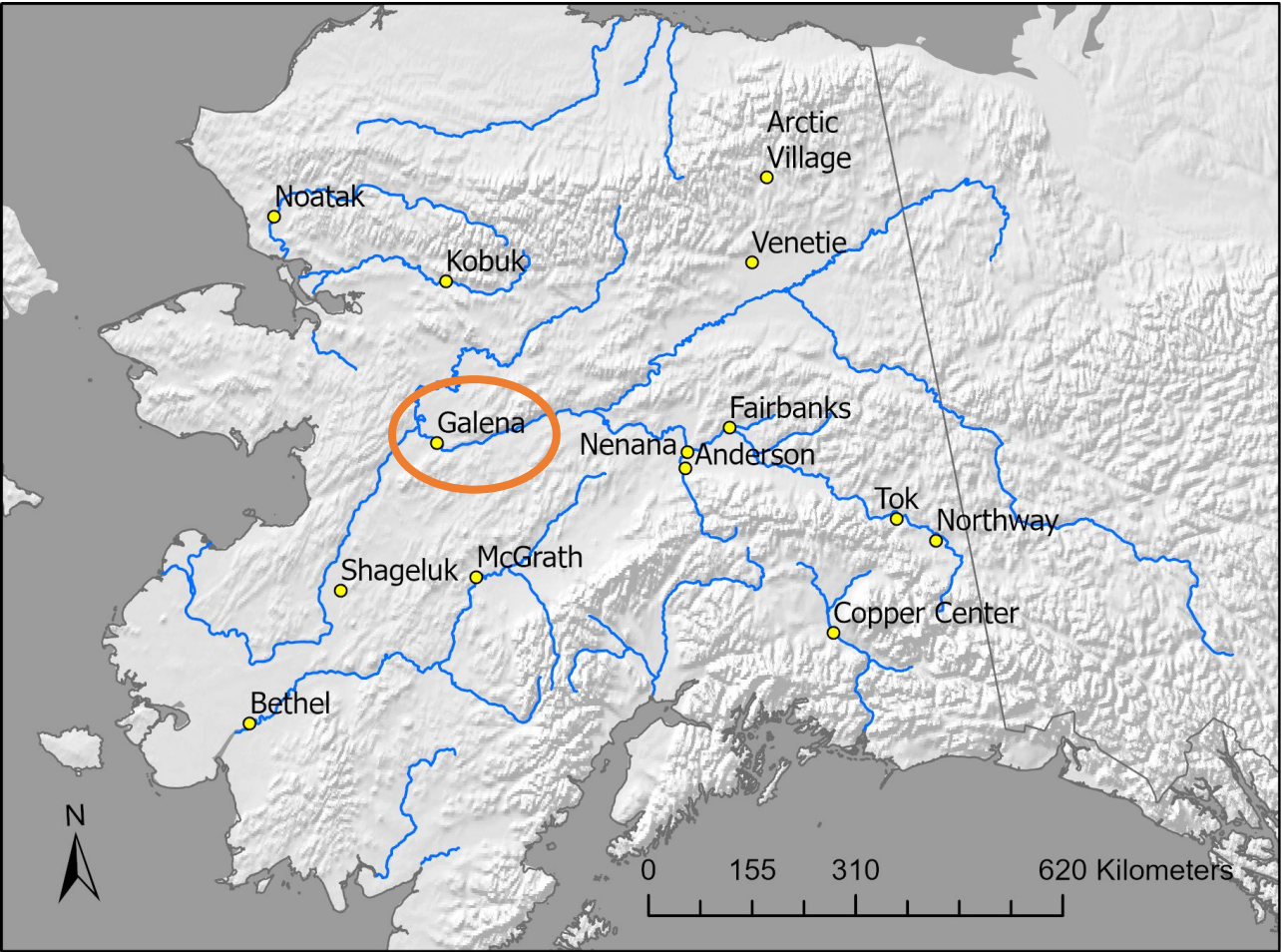


Vertical Profile





# Galena





**Karin Lehmkuhl Bodony**  
Founding Members · November 24 at 7:29 PM · 🌐

GALENA: The Yukon is deep where the Air Force put in sheet pilings to protect our airstrip from erosion. There is often an open hole there at freezeup which sometimes stays open all winter and creates ice fog. Its a pretty big open hole this year. (This photo is from last week).



   10

1 Comment Seen by 94

 Like

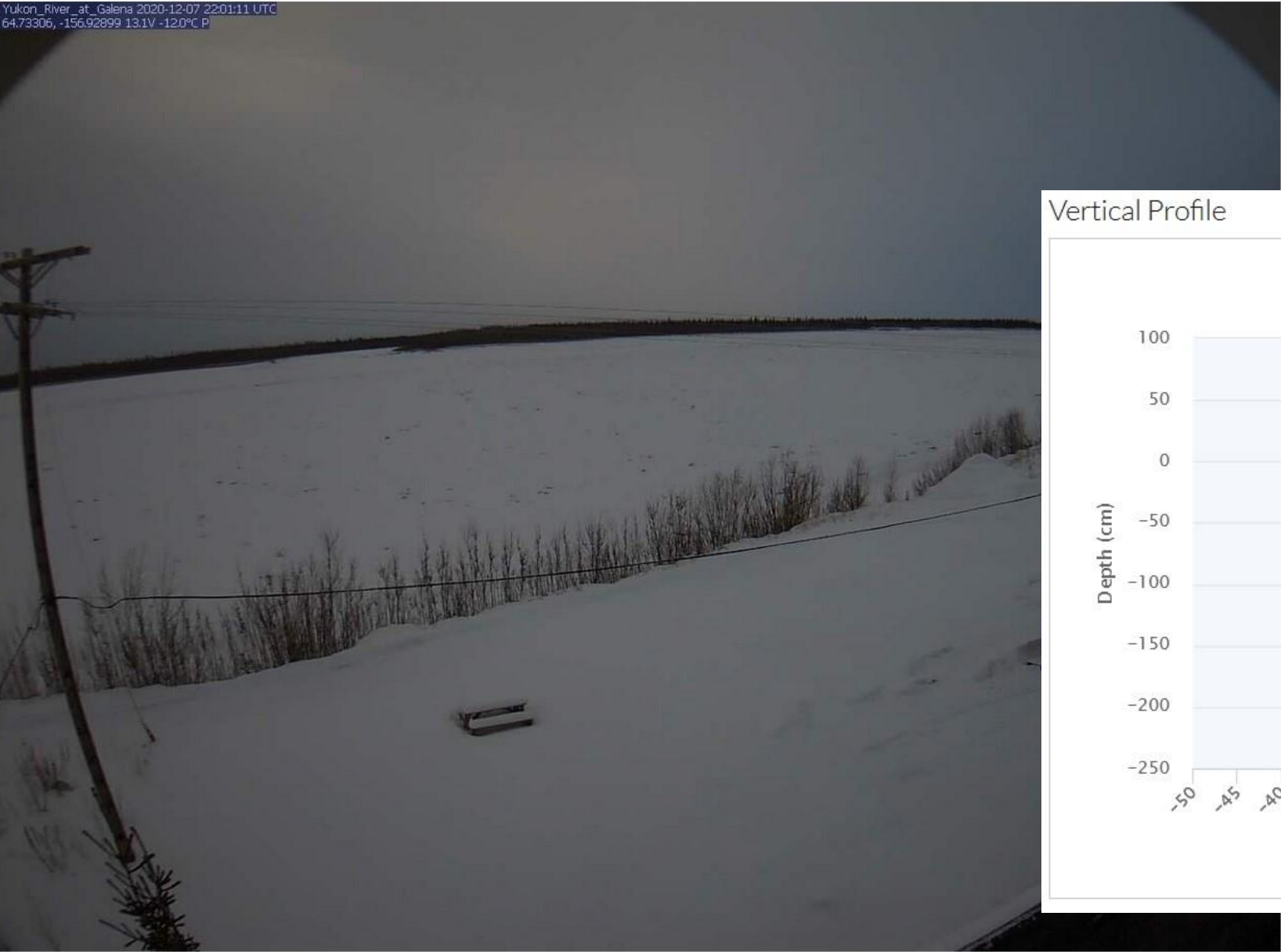
 Comment

 Share

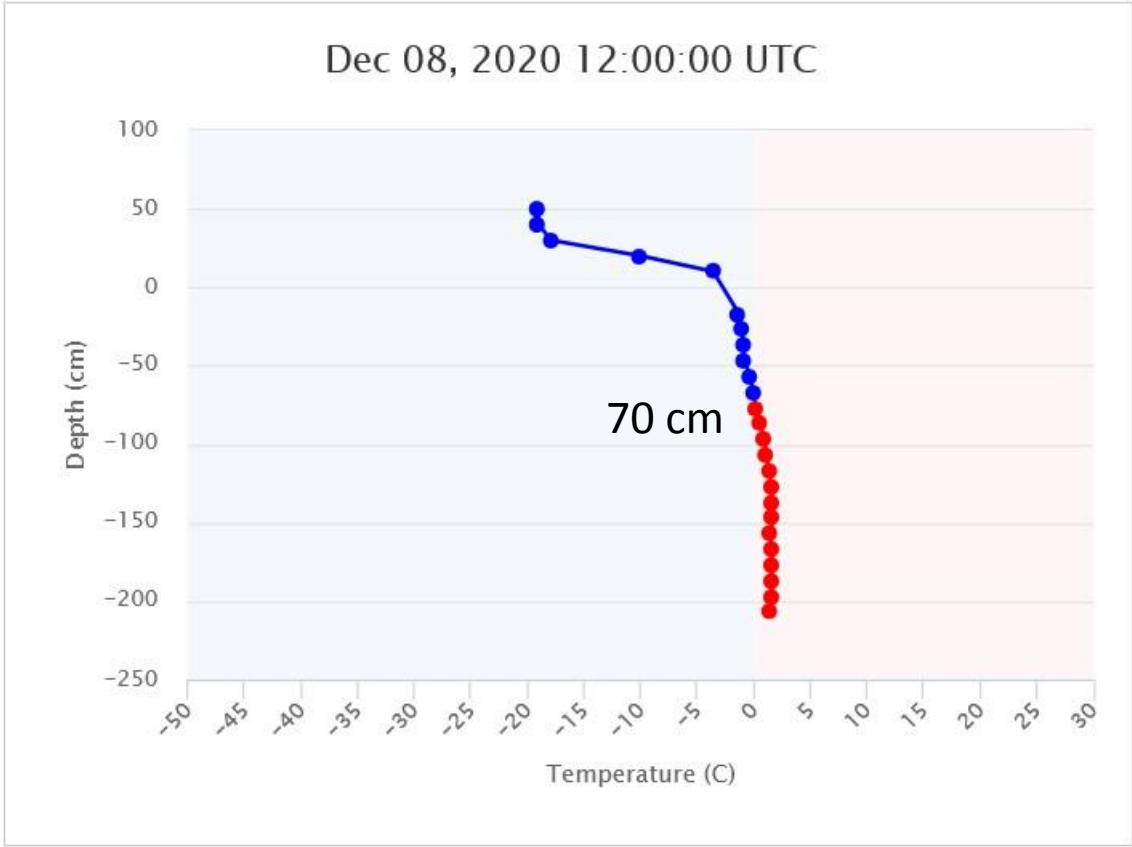


**Karin Lehmkuhl Bodony** Author  
Thanks for sharing the photo, Nolan!

# Galena

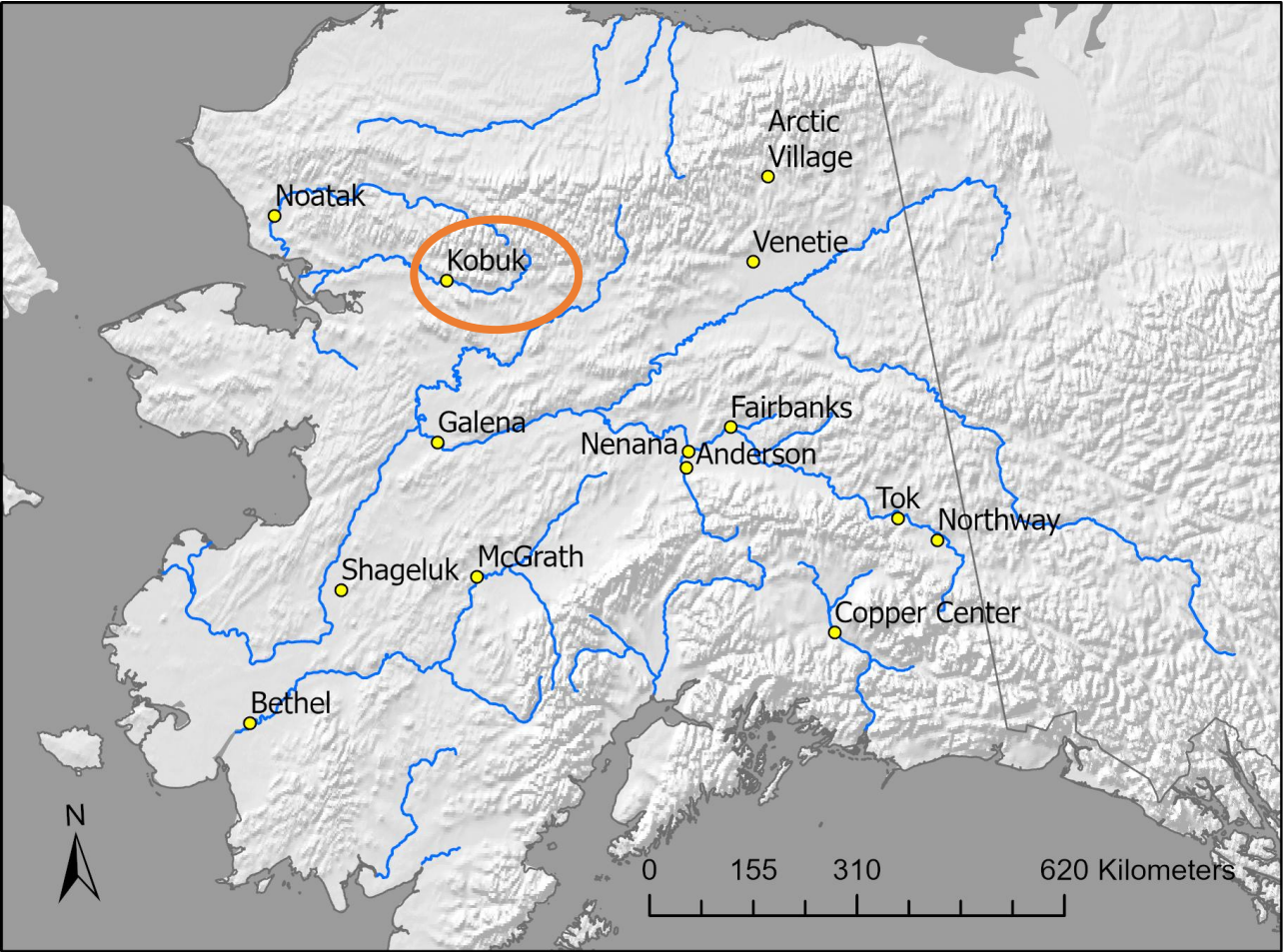


Vertical Profile



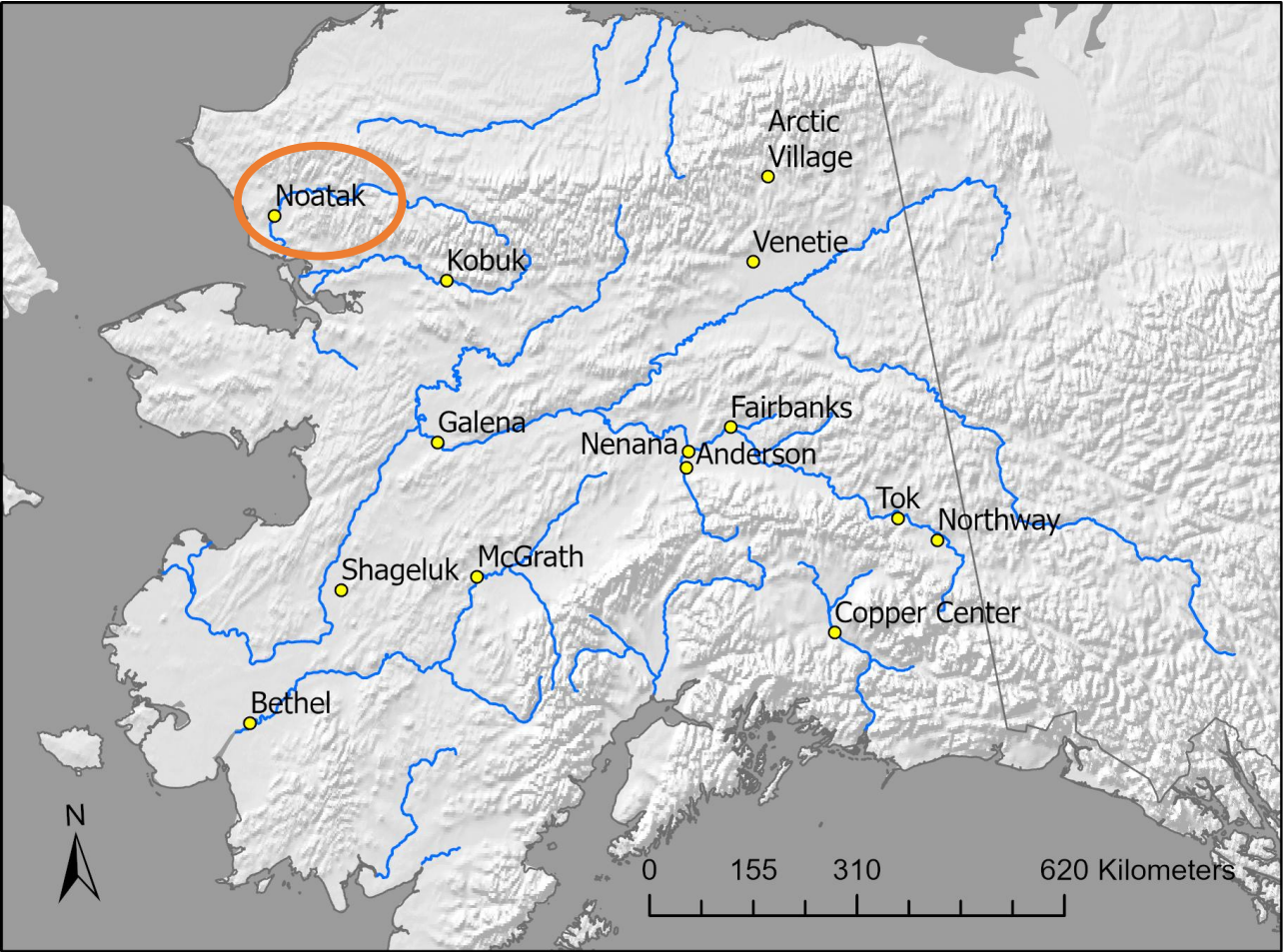


# Kobuk





# Noatak





**Brett Pietila**  
November 14 at 1:06 PM · 🌐

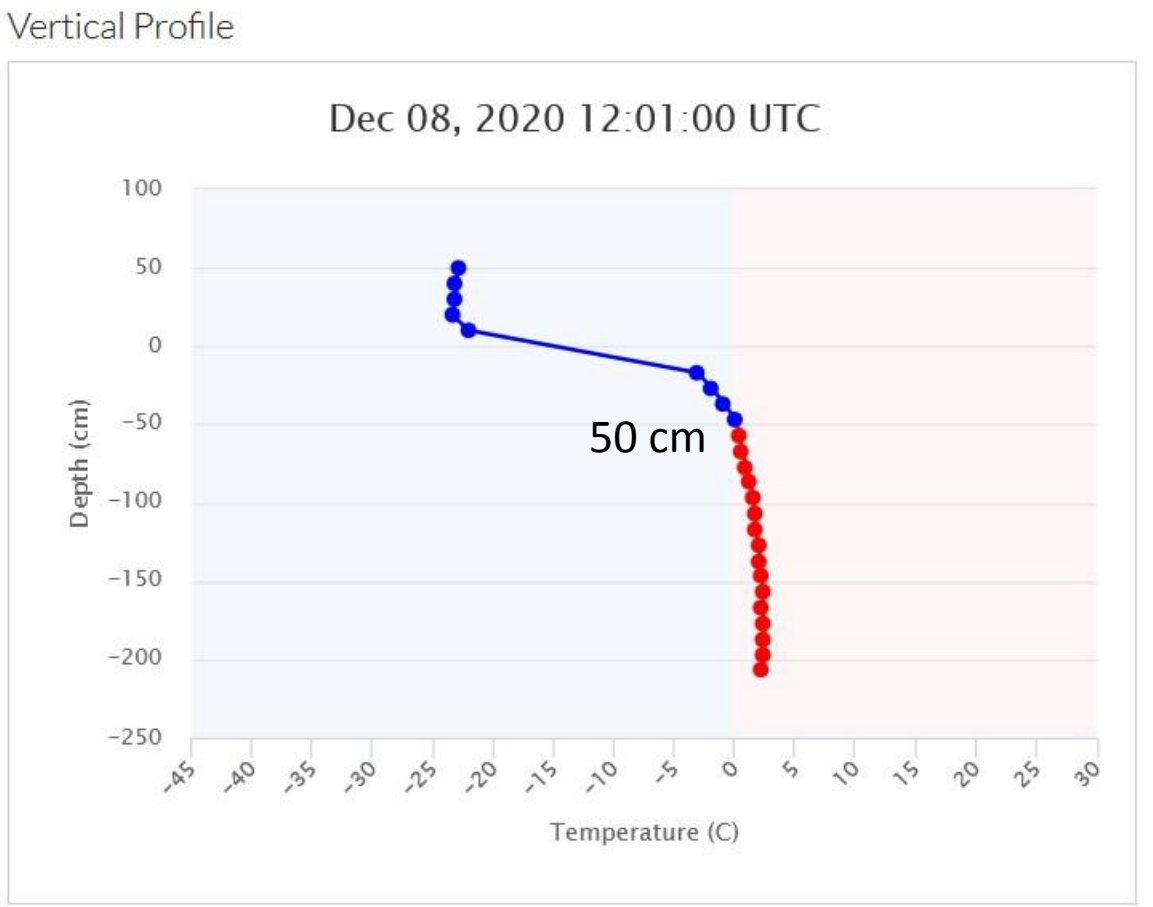
Last day of boating drone photo with slush ice coming down. Looking forward to getting outside with classes this year!



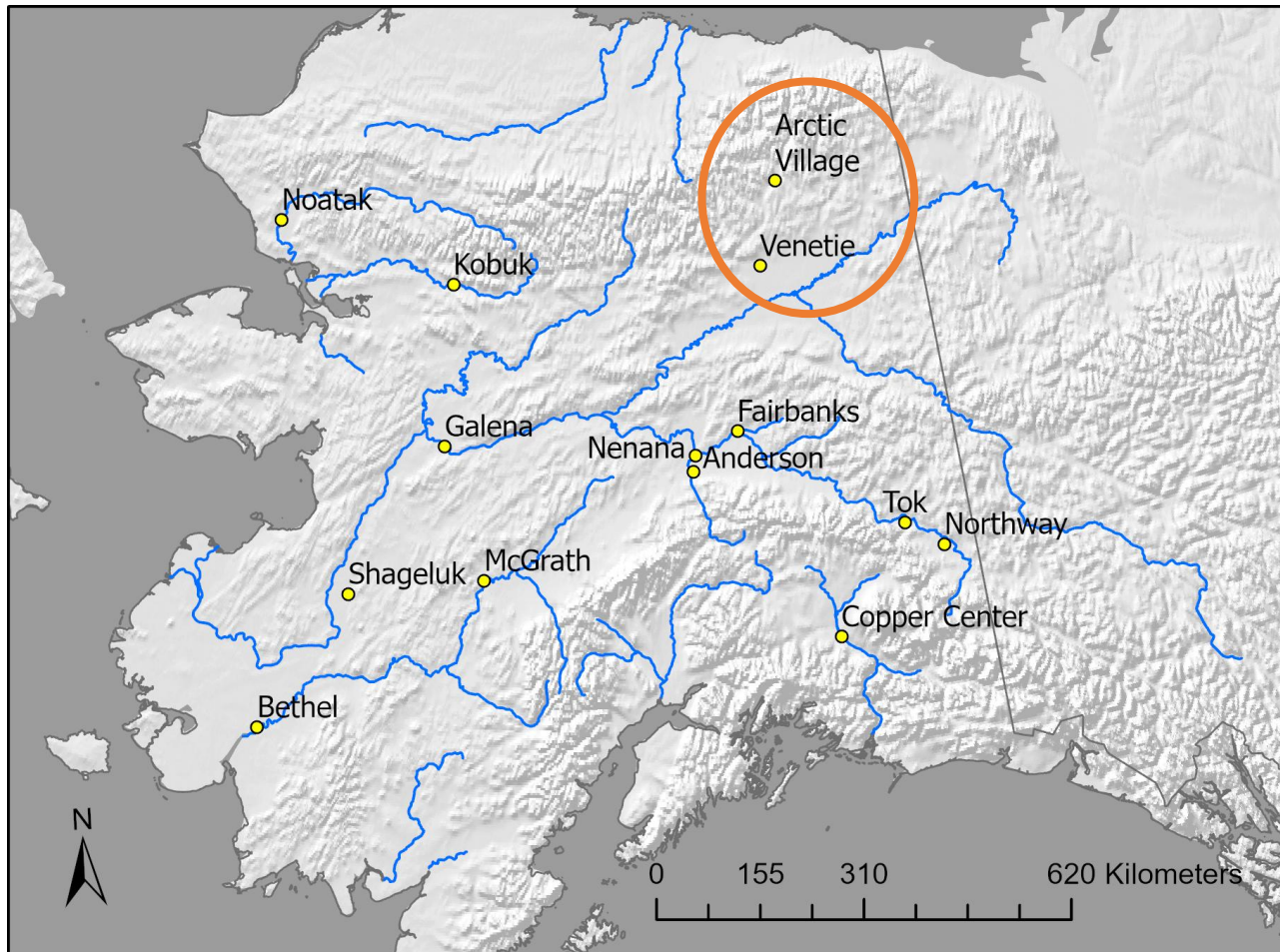


# Noatak

Noatak\_River\_below\_Noatak 2020-11-26 22:01:10 UTC  
67.51705, -163.01579 12.0V -1.0°C P



# Venetie & Arctic Village



Lake near Venetie

Vertical Profile

